

**Report of:** Service Director – Adult Social Care

Meeting of:	Date	Agenda item	Ward
Health and Wellbeing Board	15 January 2014		
Delete as appropriate	Exempt	Non-Exempt	

## **SUBJECT: LEARNING DISABILITY AND AUTISM SERVICES – EVALUATION AND IMPROVEMENT PLAN**

### **1. Synopsis**

This report presents the key findings of Islington's *Learning Disabilities Joint Health and Social Care Self Assessment Framework* and *Autism Self-Evaluation*, describes Islington's achievements and sets out priorities for 2013/14 in the Learning Disability Services Improvement Plan and the Autism Services Improvement Plan. The *Learning Disabilities Joint Health and Social Care Self-Assessment Framework* is a national quality assurance tool issued by NHS England and was submitted by Islington on the 29<sup>th</sup> November 2013. The *Autism Evaluation* is a separate quality assurance tool, issued by Public Health London in partnership with the Improving Health and Lives (IHAL) Learning Disabilities Observatory, and was submitted by Islington on the 30<sup>th</sup> September 2013. Unlike previous years, in 2012/13, neither evaluation tool will be subject to external validation by either NHS England or IHAL, though the content will be published on their respective websites. Islington's Health and Wellbeing Board has received delegated strategic ownership of both the Learning Disabilities Joint Health and Social Care Self-Assessment Framework and the *Autism Self-Evaluation* and a formal report is timetabled for the Board on the 15<sup>th</sup> January 2014. In response to the findings of the *Learning Disabilities Joint Health and Social Care Self-Assessment Framework* and *Autism Evaluation*, Islington has developed a Learning Disability Services Improvement Plan and an Autism Services Improvement Plan.

In 2012/13 Islington has secured an overall green rating for learning disability services, building on an amber performance in 2011/12. Key achievements have included: the delivery of an accommodation strategy and procurement plan, informed by an in-depth five year needs analysis; review and renewed respite offer to family carers; development of a transition strategy in partnership with children's services,

key actions include the commissioning of a further education service with Camden borough Council. Priorities for 2013/14 are working with primary and secondary health care services to ensure provision is accessible to people with learning disabilities; delivering the learning disability accommodation procurement strategy; completing a review of social inclusion services; and delivering the Islington Winterbourne View Improvement Plan.

Islington has continued to build on the overall green rating awarded for autism provision by NHS London in February 2012. Subsequent key achievements have included securing funding to develop an autism assessment and treatment clinic to build a robust diagnostic pathway; the opening of Barnsbury Park, an extra- sheltered care accommodation scheme for ten adults with autism and high needs; funding and development of Spectrum, a new day centre for adults with autism and high needs, scheduled to open in December 2013. In 2013/14 the priority is to ensure adults with high functioning autism/Asperger's Syndrome are involved in the review, design and performance management of specialist and generic services; to understand the needs of Islington's population; and launch the Autism Assessment and Treatment Clinic.

## 2. Recommendations

The Health and Wellbeing Board is asked to:

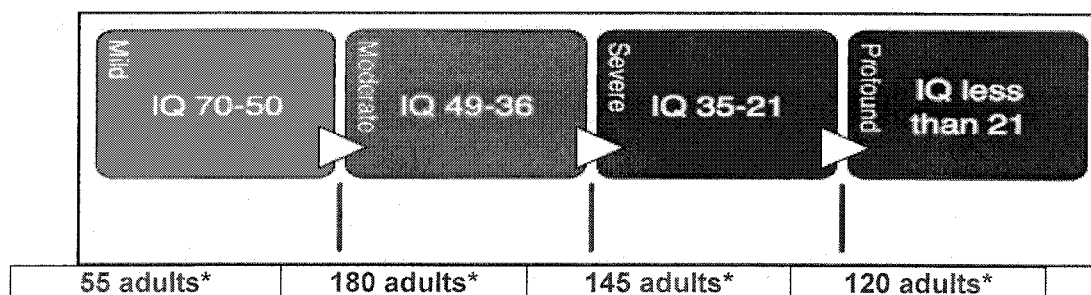
- 2.1 Note the findings of the Islington *Learning Disabilities Joint Health and Social Care Self-Assessment Framework*.
- 2.1 Note the findings of the *Autism Self Evaluation*.
- 2.2 Agree the Islington *Learning Disabilities Services Improvement Plan*.
- 2.3 Agree the Islington *Autism Services Improvement Plan*.
- 2.4 Agree the governance structure supporting the delivery of the Learning Disability and Autism Services Improvement Plans.

## 3. Background

### 3.1 Islington's population

#### 3.1.1 Number of adults with learning disabilities or/and autism

In October 2013, 499 adults with learning disabilities were in receipt of a service from Islington Learning Disability Partnership. Approximately 850 people are registered with an Islington GP as having a global learning disability and 220 people are registered as having an autistic spectrum condition. (The number of people with autism is under recorded, evidence suggests that approximately 50% of people with a learning disability also have autism. The severity of a global learning disability is defined as follows:



\* Estimated number of adults with based on need rather than diagnosis

### 3.1.2 Transition

The number of adults in Islington with learning disabilities is growing incrementally year on year. This is due partly to improved health outcomes for people with learning disabilities as a result of: better health care; anti-discriminatory changes in societal attitudes to disability; anti-discriminatory legislation (Equality Act 2010); and the pressure exerted by the family carers of people with learning disabilities on the local democratic system and public sector to improve provision.

The demographic growth costs are set out in the table below:

2011/12
£2,272,000
2012/13
£2,800,000
2013/14
£2,000,000*

(\*The decrease in expenditure is due to commissioning efficiencies achieved via e.g. application of the care cost calculator)

The number of adults with learning disabilities and/or autism has increased by 8% [50 people] in 2012/13, which is significantly above the national average and has resulted in an estimated additional cost pressure of £2,800,000.

### 3.1.3 Ageing population

Many adults with learning disabilities and/or autism are cared for at home by family carers with minimal input from public services. As people with physical and cognitive disabilities are living longer, often with complex behavioural and physical needs, family carers are also aging and becoming frail, resulting in relatively inexpensive care arrangements breaking down and 24-hour commissioned care needed to fill the gap.

### 3.1.4 Out of borough placements

In November 2013, 135 adults with global learning disabilities were supported by Islington in out of borough placements representing 20% of the adult learning disabled population. 115 people are directly funded by Adult Social Services, 13 people were funded by the CCG, six people were in assessment and treatment hospital placements and seven people were placed in residential continuing health care services. A further five people were externally funded by NHS Specialist Commissioning via the North London Forensic Contract. Of the social services cohort approximately: 31 people were placed in care homes within a 10 mile radiance of Islington; 29 people lived within a 10-50 mile residence; 28 people lived within a 50-100 mile radiance; and 27 people lived in residential accommodation over a 100 miles away from Islington.

## 3.2 The Evaluation Process

The *Learning Disabilities Joint Health and Social Care Self-Assessment Framework* was issued by NHS England and replaces the *Valuing People Now Learning Disabilities Partnership Board Self-Assessment* and the *NHS London Learning Disability Self-Assessment Framework*. The new

assessment proforma aims to align key national policy and guidance<sup>12345</sup> relating to the governance of health and social care provision to adults with learning disabilities. NHS England has delegated governance of the *Learning Disabilities Joint Health and Social Care Self-Assessment Framework* to Health and Wellbeing Boards. The format and content of the assessment proforma has changed significantly since 2011/12 with a new focus on joint working by health and social care agencies to ensure that people with learning disabilities: 'stay healthy, are safe and live well'. The *Learning Disabilities Joint Health and Social Care Self-Assessment Framework* submission represents an in-depth analysis of Islington's performance. Qualitative evaluation statements contained in the submission have been validated by people with learning disabilities and family carers via a 'My Story' Questionnaire. The evaluation content is awarded a red/amber/green (RAG) performance rating. A summary of the key RAG rated assessment themes are included in Appendix A.

The *Autism Self-Evaluation* is a quality assurance tool, issued by Public Health London, designed to monitor local progress on achieving the expectations set out in the *Autism Act* (2009) and *Rewarding and fulfilling lives: the strategy for adults with autism in England* (2010). The evaluation focuses on: improved health outcomes; economic activity; accommodation provision; personalisation; reasonable adjustments within the criminal justice system; involvement of people with autism in designing, commissioning and performance managing services. The format and content of the assessment proforma has changed significantly since 2011/12 with a new focus on understanding the needs of the local community and providing services to people who have high functioning autism/Asperger's Syndrome (i.e. people who do not have a learning disability co-morbidity). The Autism London Alliance Group has been consulted on the findings of Islington's Autism Self-Evaluation and Improvement Plan. Unlike the 2011/12 version, the 2012/13 Self-Evaluation tool does not provide a red/amber/green performance rating, but supports a quantitative and qualitative analysis of Islington's performance.

### 3.3 Key achievements in 2012/13

In 2012/13 Islington has secured an overall green rating for learning disability services, building on an amber performance in 2011/12. In autism services Islington has continued to build on the overall green rating awarded for autism provision by NHS London in February 2012.

#### 3.3.1 Understanding the needs of the community

- Delivery of a comprehensive health and social care five year demand forecast analysis of the diverse needs of young people and adults with learning disabilities and or autism, taking into account: demographic growth; prevalence of challenging behaviour; the increasing complexity of people's health needs; and the frailty and age of family carers. Children's services have also undertaken a comprehensive audit of the needs of Children and Young People in Islington with Autism, to inform service planning.
- ILDP and GP practices have been refreshing the shared register of people with learning disabilities living in the borough.

#### 3.3.2 Keeping people safe

- Islington has a Winterbourne View Improvement Plan in place and it remains well placed to meet the DH Winterbourne View Concordat of Actions (2012) expectations.

<sup>1</sup> Winterbourne View Final Report 2012

<sup>2</sup> Adult Social Care Outcomes Framework 2013-14

<sup>3</sup> Public Health Outcomes Framework 2013-2016

<sup>4</sup> The Health Equalities Framework. An outcomes framework based on the determinants of health inequalities

<sup>5</sup> National Health Service Outcomes Framework 2013-14

- Islington Learning Disability Partnership (ILDP) continues to provide a comprehensive one stop service meeting the health and social care needs of adults with global learning disabilities, autism and mental health needs via a Section 75 (National Health Services Act, 2006) pooled funding agreement between Islington CCG, adult social services and the Camden and Islington Foundation Trust.
- A Positive Behaviour Support policy, setting standards, approved approaches, reporting and monitoring processes for working with adults with learning disabilities and autism whose behaviour challenges has been produced by Adult's services and ratification is planned for December 2013.
- Islington CCG and Social Services has commissioned a 'Circles of Protection' service providing an advocacy service for adults living in isolated out of borough placements with infrequent visits from family.

### **3.3.3 Personalising services and promoting self-directed support**

- Via the innovative 'Making it Real' project Islington Council has promoted the up take of personal budgets to service users and family carers and is the top performing borough in the 2012/13 published Adult Social Care Outcome Framework.
- Islington CCG has made Personal Health Budgets available to people with learning disabilities.

### **3.3.4 Improving health outcomes**

- The percentage of people with learning disabilities accessing national bowel and breast health screening programmes compared to the non-learning disabled population.
- University London College Hospital has embarked on a programme to ensure their services are accessible to people with profound and multiple learning disabilities.
- Health Passport and Health Action Plan proforma have been produced to promote usage by primary and secondary health clinicians.

### **3.3.5 Providing local accommodation opportunities which support independence**

- Endorsement of an ambitious five year Learning Disability Accommodation Strategy and Procurement Plan to provide quality and affordable local services. Barnsbury Park, a specialist extra-sheltered care scheme for ten adults with autism and very high needs opened in May 2013. Leigh Road a similarly specialist extra-sheltered care scheme for 19 learning disabilities and very high needs is currently being built and is due to open in July 2014. Negotiations are advanced to develop four further schemes located on Camden Road, Windsor Street, City Road Forum and St Paul's Road targeting the needs of people with low, medium and severe learning disabilities.
- Housing and Social Service colleagues are working in close partnership to develop accessible local accommodation options. Examples of good practice include: allocation of building opportunities to house new services; a housing advice surgery run in partnership with ILDP.

### **3.3.6 Providing services supporting social inclusion aspirations**

- Spectrum, a new in-house day activity resource service for 12 adults with autism and high needs, is scheduled to open in December 2013, located in Highbury New Park.

- A Community Access Project (CAP) has been launched enabling young people with learning disabilities in transition (18-25 years) to access mainstream training, employment and leisure opportunities. The Business Employment and Support Team (BEST) have been working with CAP to create a pathway into employment by working with local employers.
- Islington has been working with Kaleidoscope to develop a 'Family Leadership and Job Coaching' Service training the family carers of young people in transition to act as job coaches and raise the employment aspirations of both family carers and people with learning disabilities and autism.

### **3.3.7 Supporting young adults in transition (14-25 years)**

- A Transition Board is well established supporting best practice transfer of care responsibilities between children's and adult services is well established, led at a senior level across adults, children's social services and education services. A key achievement of the programme has been to secure invest to save funding to develop local transition services for younger adults to reduce the number of young people moving out of the borough. Work is on-going to inform a restructure of transition services, develop performance indicators and develop more local accommodation and support schemes in line with Winterbourne View and value for money expectations.
- Camden and Islington Education and Social Care commissioners have collaborated on a project to commission local further education provision for young people in transition with learning disabilities.

### **3.3.8 Investing in new NHS Assessment and Treatment services**

- Camden and Islington CCG commissioners have secured new funding to develop an in-house Autism and ADHD Assessment and Treatment Clinic for adults with high functioning autism/Asperger's Syndrome. The service will be provided by Camden and Islington Foundation Trust and is due to open fully in February 2014. The service will employ an Autism Care Coordinator post to support the development of autism accessible pathways into generic health and social care provision.
- Camden and Islington CCG commissioners are working together to scope the mental health needs of adults with learning disabilities and autism across both boroughs to inform a business case to develop local NHS Assessment and Treatment and Step-down provision.

### **3.3.9 Reasonable adjustments in the criminal justice system**

- Islington council and NHS officers have been working in partnership with criminal justice system colleagues to ensure that systems make reasonable adjustments responding to the needs of people with learning disabilities and/or autism. Examples of good practice include in-reach to Pentonville Prison by ILDP staff and the development of a screening tool to identify people with learning disabilities during the admission process in prisons.

### **3.3.10 Supporting family carers**

- Following a comprehensive review and consultation programme, the local respite offer to the family carers of adults with learning disabilities and autism, has been revised supporting access to a choice of resources via personal budgets, whilst ensuring King Henry's Walk, an in-house residential short breaks service is able to meet demand.

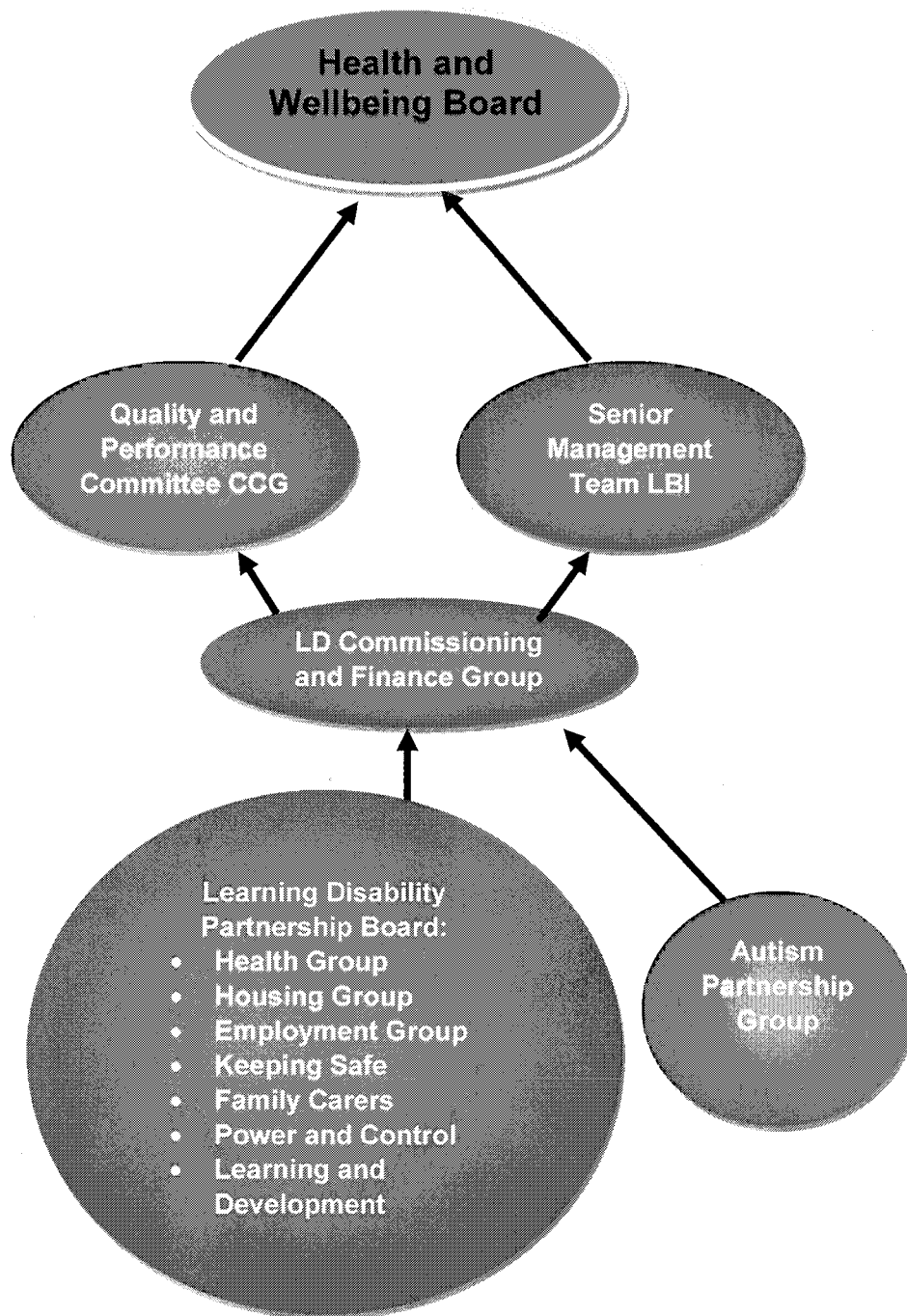
### **3.4 Summary of Improvement Plan Priorities for 2013/14**

A summary of the key Improvement Plan priorities is set out below: (Appendix B details the Learning Disability Services Improvement Plan and Appendix C details the Autism Services Improvement Plan).

- Implement the Annual Health Check Improvement Plan actions to increase the number of adults with learning disabilities who receive a Health Check (commissioned via the NHS England led GP Learning Disability Directly Enhanced Service contract) by 50%. Building on this target increase the number of people who have a Health Action Plan by 20%.
- Continue to improve health and social care data collection to understand the needs of the community, particularly adults with high functioning autism/Asperger's Syndrome.
- Work collaboratively with secondary health providers to ensure their systems make reasonable adjustments for the needs of people with learning disabilities and autism and staff receive training on their Mental Capacity Act and Deprivation of Liberty Safeguards responsibilities.
- Adults with high functioning autism/Asperger's Syndrome are currently waiting too long for diagnosis and treatment, plans are underway to address the waiting list by the end of January 2014. The new Autism and ADHD Assessment and Treatment Clinic is currently being commissioned and is planned to open in January 2014.
- Engage adults with high functioning autism/Asperger's Syndrome in the design, commissioning or performance management of services by establishing a Partnership Group to oversee the implementation of the Autism Improvement Plan.
- Continue to implement the Accommodation Strategy and Procurement Plan, working with housing to develop local accommodation opportunities.
- Work with Camden CCG to develop a business case for an Assessment and Treatment and Step-down facility for adults with mental health, learning disabilities and autism.
- Continue to improve the socio-economic well-being of people with learning disabilities and autistic spectrum conditions by working with businesses, families and residents to promote the capabilities of people with learning disabilities in the workplace.
- Review social inclusion provision in the borough and develop a model blue print that meets demand forecast needs and public expectations.
- Implement the Islington Winterbourne View Improvement Plan.
- Implement the Transition Strategy.
- Implement the Respite Improvement Plan.

### **3.5. Learning Disability and Autism Improvement Action Plan Governance**

The following flow chart sets out the governance structure overseeing the implementation of the Learning Disability and Autism Services Improvement Plan.





## **4. Implications**

### **4.1. Financial Implications**

The proposals from the Islington Learning Disabilities Autism Evaluation and Improvement Plan will be funded from existing resources within the Islington Learning Disabilities Partnership (ILDP) pooled budget.

The ILDP pooled budget had a gross expenditure budget of £28.092m for the 2012/13 financial year. The CCG's contribution to the pooled budget was £3.441m and the Council's contribution was £24.651m. The proposals in the report and the Improvement Plans for 2013/14 financial year should not create a budget pressure for Islington CCG or Islington Council. If any pressures are created from the recommendations in this report, they will need to be contained within the pooled budget and offset by management actions.

Learning Disabilities continues to be effected by demographic pressures. In 2012/13, the demographic pressure for Learning Disabilities was £2.8m. Management actions of £1.0m were identified by the Department to mitigate this pressure and the remaining £1.8m pressure was funded from Corporate demographic contingency.

A key risk to the ILDP pooled budget is a potential reduction in funding. Islington Council continues to be impacted by the reduction in Central Government funding and this is set to continue in future years. This is due to a combination of a cut in government grants, together with additional costs outside of the Council's control, for example, the changes in the borough's population meaning that more people need council services. As a consequence, savings will have to be identified across all departments to mitigate the reduction in funding.

### **4.2. Legal Implications**

The Council and NHS organisations should act in accordance with the statutory guidance, Implementing "Fulfilling and rewarding lives" (issued under section 2 of the Autism Act 2009), and should only depart from the guidance for a good reason (e.g. by being able to demonstrate that they are providing an equivalent or better alternative service).

### **4.3. Equalities Impact Assessment**

An Equalities Impact Assessment was completed on the 20th November 2013. There will be a positive impact on people with learning disabilities and people with autistic spectrum conditions in relation to improving health inequalities and socio-economic opportunities within Islington.

### **4.4. Environmental Implications**

An Environmental, Health and Safety Impact Assessment was completed on the 20th November 2013. The Learning Disability Accommodation Strategy and the Winterbourne View Action Plan propose building local services which will have local environment implications. The implications will be considered as part of the authorisation process for developing each new site. Building local provision however will significantly reduce transportation environmental implications.

## **5. Conclusion and reasons for recommendations**

In 2012/13 Islington has secured an overall green rating for learning disability services, building on an amber performance in 2011/12. Key achievements have included: the delivery of an accommodation strategy and procurement plan, informed by an in-depth five year needs analysis; review and renewed

respite offer to family carers; development of a transition strategy in partnership with children's services. In 2013/14 Islington will prioritise working with primary and secondary health care services to ensure provision is accessible to people with learning disabilities; delivering the learning disability accommodation procurement strategy; completing a review of social inclusion services; and delivering the Islington Winterbourne View Improvement Plan.

Islington has continued to build on the overall green rating awarded for autism provision by NHS London in February 2012. Key achievements have included securing funding to develop an autism assessment and treatment clinic to build a robust diagnostic pathway; the opening of Barnsbury Park, an extra- sheltered care accommodation scheme for ten adults with autism and high needs; funding and development of Spectrum, a new day centre for adults with autism and high needs, scheduled to open by January 2014. In 2013/14/15 the priority is to ensure adults with high functioning autism/Asperger's Syndrome are involved in the review, design and performance management of services; understand the needs of Islington's population and launch the Autism and ADHD assessment and treatment clinic.

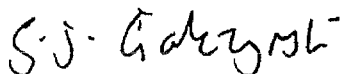
**Background papers:**

- Winterbourne View Improvement Plan.
- Transition Strategy.
- Respite Improvement Plan
- Accommodation Strategy

**Attachments:**

Islington Learning Disability Services Improvement Plan 2013/14  
Islington Autism Spectrum Condition Action Plan 2013/14

**Final report clearance:**



**Signed by:** Service Director – Adult Social Care

**Date:** 6 January 2014

**Received by:** Head of Democratic Services

**Date:**

**Report authors:**

Laura Gordon (Senior Commissioning Manager- Disability Programme)

Tel: 0207 527 8145 or 07779334307

E-mail: [laura.gordon@islington.gov.uk](mailto:laura.gordon@islington.gov.uk)

Saranne Mallinson (Commissioning Officer - Disability Programme)

Tel : 0207 527 8138

E-mail : [saranne.mallinson@islington.gov.uk](mailto:saranne.mallinson@islington.gov.uk)

## APPENDIX A

### Learning Disabilities Joint Health and Social Care Self-Assessment Framework

The table below summarises Islington's Red/Amber/Green rated performance in 2012/13 compared to 2011/12:

Standard	2011/12 Performance	2012/13 Performance
People with learning disabilities have had an Annual Health Checks and where appropriate have a Health Action Plan	Red	Amber
GPs and ILDP share an accurate register of the local learning disabled population.	Amber	Amber
Community health services are accessible to people with learning disabilities - podiatry, midwifery, dental, optometry, community nursing, and pharmacy	Amber	Amber
Involvement of Family Carers and people with learning disabilities in staff recruitment and training	New	Amber
People with learning disabilities are included in the community	New	Amber/Green
The criminal justice makes reasonable adjustments for people with learning disabilities	Amber	Amber/Green
Providers are responsive to complaints	Amber	Green
Learning disabled people have accessed national Health Screening opportunities (including breast and bowel)	Amber/Green	Green
Islington works in partnership with people with learning disabilities and family carers	Green	Green
In borough secondary care services make reasonable adjustments for people with learning disabilities	Green	Green
Children's transition to adult services is seamless and services meet needs	Green	Green
External service contracts are well managed by commissioning	Green	Green
People with learning disabilities are safe	Green	Green
Staff receive appropriate training including MCA and DOLS)	Green	Green
NHS and Social services are integrated to deliver seamless support to people with learning disabilities and family carers	Green	Green
Equality Impact Assessments are completed for all commissioned services	New	Green
Timely support plan reviews have been completed for people with learning disabilities receiving services	New	Green
People with learning disabilities have access to local amenities e.g. changing rooms	New	Green
People with learning disabilities have access to arts and culture opportunities	New	Green
People with learning disabilities have access to sports and leisure opportunities	New	Green
People with learning disabilities are in employment	New	Green



## ISLINGTON AUTISM SERVICES IMPROVEMENT ACTION PLAN 2013/14

No	autism SAF Target	Outcome	Action	Monitor Progress	Lead	Target Date
1	Adults with autism achieve better health outcomes. NHS bodies to include adults with autism when gathering information on health inequalities, morbidity rates and recovery from ill-health/injury.	Information is systematically captured about people with functioning/ high functioning Asperger's autism to inform demand forecasting and service planning.	<p>Train GP practices on how to code adult patients with autism correctly to inform demand forecast analysis and service planning as part of the Learning Disability Directly Enhanced Service (DES) training for GPs.</p> <p>autism and ADHD Assessment and Treatment Clinic to provide MH and Disability commissioners with quarterly updates on:</p> <ul style="list-style-type: none"> <li>• Number of referrals</li> <li>• Number of people who have received an assessment and have/hot received an autism diagnosis</li> <li>• Waiting list of patients</li> <li>• Known prevalence rates</li> <li>• Any other information which will support capacity planning.</li> </ul> <p>Adults and Children's commissioners to develop a shared understanding of the needs of people with autism using DSM 5 diagnostic criteria to support transition planning.</p>	LD Partnership Health Sub-group & autism Partnership Group	Saranne Mallinson	March 2014
2	Adults without autism are included and economically active. Map the usage of inclusion services by people with autism.	Highlight gaps in local training, education and social inclusion services for young people coming through transition supporting service priority planning	<p>Adults and Children's commissioners to develop a shared understanding of the needs of people with autism using DSM 5 diagnostic criteria to support transition planning.</p>	Employment subgroup & autism Partnership Group	Sharon Hoskins/Ruby Noorani	March 2014
3	Adults with autism are living in accommodation that meets their needs. Local housing strategy to	People with autism have access to local housing options which meets their needs.	<p>To include the employment and training needs of younger adults in transition with autism as part of the Transition Programme Review.</p> <p>Evaluate the performance of the new day opportunities service for adults with autism 'Spectrum', global learning disabilities and high needs opening in November 2013.</p> <p>Implement Accommodation Strategy and Procurement Plan.</p> <p>Housing colleagues to consider how the needs of people with</p>	LD Housing Subgroup & autism Partnership Group	Gary Hamilton Karen Lucas	On-going March 2014

	address the short and long-term requirement of adults with autism.		Functioning/High Functioning autism can be taken into account when allocating general needs housing.  Evaluate the outcome based performance of the Barnsbury Park Scheme, a service for people with autism and global learning disabilities which opened in May 2013.		Ruby Noorani	March 2014
4	Local authorities and partners know how many adults with autism live locally.  The needs analysis information available is validated and informs Islington's Joint Strategic Needs Analysis (JSNA).	The JSNA acknowledges the needs of adults with autism	Provide a JSNA information fact sheet for adults with functioning/high functioning/Asperger's autism in the next JSNA review.  The revised Islington adult social services database from 2014 will identify people's long term conditions including autism.  ILDPA are currently developing a register of adults with global learning disabilities in collaboration with GPs. The register also includes co-morbidities including autism.	Autism Partnership Group	Laura Gordon	March 2014
5	A clear and trusted diagnostic pathway is available locally	Adults who may have functioning/high Functioning autism receive a local assessment, diagnosis and treatment in a timely manner.	Islington CCG to commission an autism assessment clinic to address the waiting list of people referred for a diagnostic assessment in collaboration with Camden CCG.  Islington CCG to commission a new autism and Attention Hyperactivity Disorder assessment and treatment clinic, in partnership with Camden. The new service will provide social skills and group training to people with an autism diagnosis.  Work in partnership with the Children's Attention Deficit Hyperactivity Disorder (ADHD) and autism Clinic provided at the Northern Health Centre to support smooth transition.	Health Sub group & Autism Partnership Group	Martin White         Ruby Noorani/Sharon Hoskins	Initiate start up programme September 2013 Service start January 2014   March 2014
6	Reasonable adjustments have been made to support access to information about services to people with autism.	People with functioning/high functioning autism are able to find out about Islington Council services via autism friendly information.	Review the autism friendliness/accessibility of the Islington Council website.	Health Sub group & Autism Partnership Group	Ruby Noorani and Communication Team	October 2014
7	Provide local assessment and treatment and step-down services for people with autism, learning disabilities and mental health needs	People are able to access quality services based in their local community.	Islington and Camden CCG to develop a business case for developing a local assessment and treatment and step-down	LD Commissioning and Finance Group  Camden and Islington Assessment and Treatment and Step-down working party.	Laura Gordon	February 2014

