



HOMES AND COMMUNITIES SCRUTINY COMMITTEE

18 July 2024

SECOND DESPATCH

Please find enclosed the following items:

Item 1 Annual Report from the Metropolitan Police - To Follow

1 - 8

Enquiries to : Ola Adeoye
Tel : Democracy@islington.gov.uk
Email : democracy@islington.gov.uk

This page is intentionally left blank

HOMES AND COMMUNITY SCRUTINY

18th of July 2024

Ch Supt Andy CARTER
Supt Jack MAY-ROBINSON



MORE TRUST | LESS CRIME | HIGH STANDARDS

Agenda Item B1

A New Met for London

Community crime-fighting - working with Londoners to make it a safer place

- Fundamentally resetting how we serve Londoners
- Transform how we protect the public from harm, combatting violence against women and girls and safeguarding children
- Provide the best results for victims of crime
- Prevent crime through a proactive and precise approach

Culture change

- Embed values and principles of policing by consent in everything we do
- Become a more diverse and inclusive organisation
- Root out discrimination and raise our standards

Fixing our foundations

- Set up the Met to succeed building a well-run organisation and making it easier for people to do their job
- Transform our leadership and learning, developing the leaders of the future and giving our people the skills they need



Central North – Local Action Plan

Page 3

Action 1

Strengthening
Neighbourhood
Policing

MORE TRUST | LESS CRIME

Action 2

Enhancing
our
Professionalism

MORE TRUST | HIGH STANDARDS

Action 3

Greater involvement
of Citizens in
Policing

MORE TRUST

Action 4

Delivering
Coordinated
Crime Fighting

LESS CRIME

Action 5

Developing and
supporting our
people

HIGH STANDARDS

Action 6

Improving
our Communication

MORE TRUST

Action 7

Taking a Trauma
Informed Approach
to Policing

MORE TRUST | HIGH STANDARDS

Action 8

Strengthening
Public
Protection

LESS CRIME

Action 9

Protecting the most
vulnerable in
Islington

MORE TRUST

Action 10

Delivering high
quality
investigations

MORE TRUST | LESS CRIME

Central North – Local Action Plan

Action 1 – Strengthening Neighbourhood Policing

We will deliver a programme to Strengthen Neighbourhood Policing on Islington to deliver greater visibility, local problem solving and engagement.

Action 2 – Enhancing our Professionalism

We will enhance our professionalism to ensure that Islington officers have the highest standards.

Action 3 – Greater involvement of Citizens in Policing

We will deliver the a Citizens in Policing Strategy to harness and capture the concerns, tensions, sentiments and viewpoints of all Islington's communities and our partner agencies to develop and shape local policing delivery.

Action 4 – Delivering Coordinated Crime Fighting

We will work with our internal and external partners to deliver Islington's Coordinated Crime Fighting Plan.

Action 5 – Developing and Supporting our People

We will develop and support our people to ensure we have the best officers and staff who are equipped to deliver More Trust, Less Crime and High Standards.

Central North – Local Action Plan

Action 6 – Improving our Communication

We will improve our communication to ensure maximum reach across our communities and partners.

Action 7 – Taking a Trauma Informed Approach to Policing

We will deliver a Trauma Informed Approach to Policing ensuring that our response reflects the trauma of our communities and our staff.

Action 8 – Strengthening Public Protection

We will deliver a programme to Strengthen Public Protection on Islington.

Action 9 – Protecting the most vulnerable in Islington

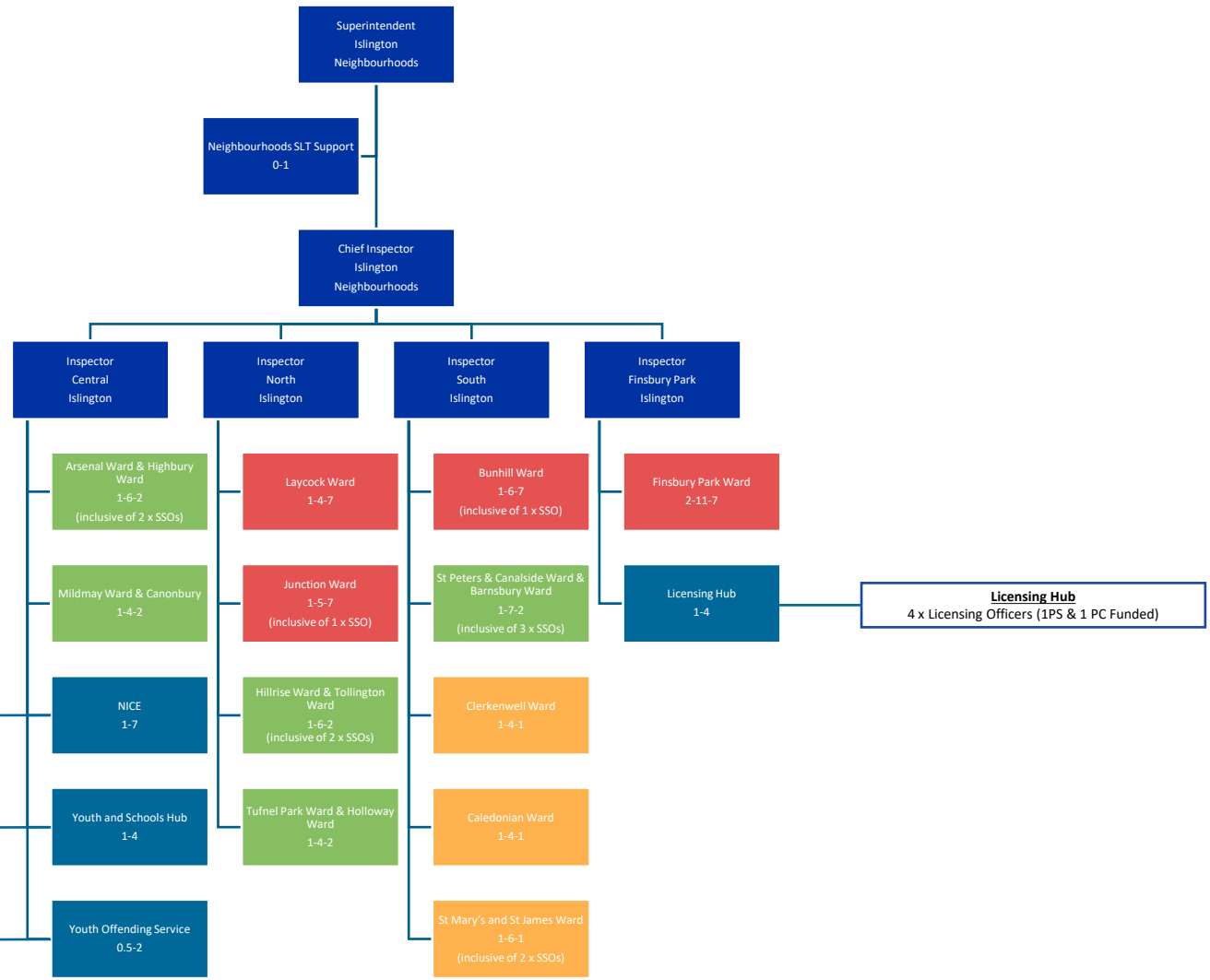
We will deliver a programme to Strengthen Public Protection on Islington.

Action 10-We will deliver a programme to Strengthen Public Protection on Islington.

We will deliver a programme of work to ensure the delivery of proportionate and high quality investigations.

Islington Neighbourhoods and Partnership Design

Page 6



Integrated Community Engagement
 1 x Hate Crime Officer (shared with Camden)
 1 x Faith Officer (shared with Camden)
 1 x Race & Diversity officer (shared with Camden)
 1 x Street Population Officer (1 PC Funded)
 1 x Problem-Solving Officer
 2 x ASB Officers

Schools & Youths Engagement Coordination
 1 x VPC Coordinator
 3 x Youth Engagement Officers

YOS Hub Islington
 0.5 PS – Job Share with YOS 0.5 PS from Camden
 2 x Islington YOS Officers

Key	
	High Priority (Sergeant with 1 ward)
	Medium Priority (Sergeant with 1 ward)
	Standard Priority (Sergeant with 2 wards)
	Pan-borough function

Year 1 BWT	
Superintendent	1
Chief Inspector	1
Inspector	4
Sergeant	16.5
Constable	85
PCSO	41

Crime Performance FY 23-24 (CFYTD) v FY 22-23 (PFYTD)

Public Space Crime Performance				
	Offences			
	Current FYTD	Previous FYTD	% Change	
Neighbourhoods				
Personal Robbery	1004	1065	-5.7%	↓
Theft Person	2830	2688	5.3%	↑
Residential Burglary	1163	1171	-0.7%	↓
Theft Of Motor Vehicle	523	564	-7.3%	↓
Theft From Motor Vehicle	1509	1654	-8.8%	↓
Interfering with MV	183	195	-6.2%	↓
Aggravated Taking of MV	5	16	-68.8%	↓
Serious Violence				
Homicide	4	4	0.0%	↔
Violence with Injury	2278	2269	0.4%	↑
Other Priorities				
Hate Crime (ex DA)	819	905	-9.5%	↓
LBDs	0	5	-100.0%	↓
Knife Crime	397	437	-9.2%	↓

