

Improving recycling performance in Islington

London Borough of Islington Scrutiny Review
11th September 2017

Cathy Cook
Local Authority Support Manager, Resource
London

London challenges

- **8.6 million residents, forecast to reach 10 million by the 2030's;**
- **Flats accounting for up to 80% of housing stock in some boroughs**
- **London is a city of transience and movement**
- **Huge swell of daytime visitors**
- **Cultural diversity; more than 100 different languages are spoken in almost every borough across London**
- **Significant budget constraints; cuts to central government grants since 2009-10, have reduced spending per London resident by an average of 31.4%.**

Resource London programme

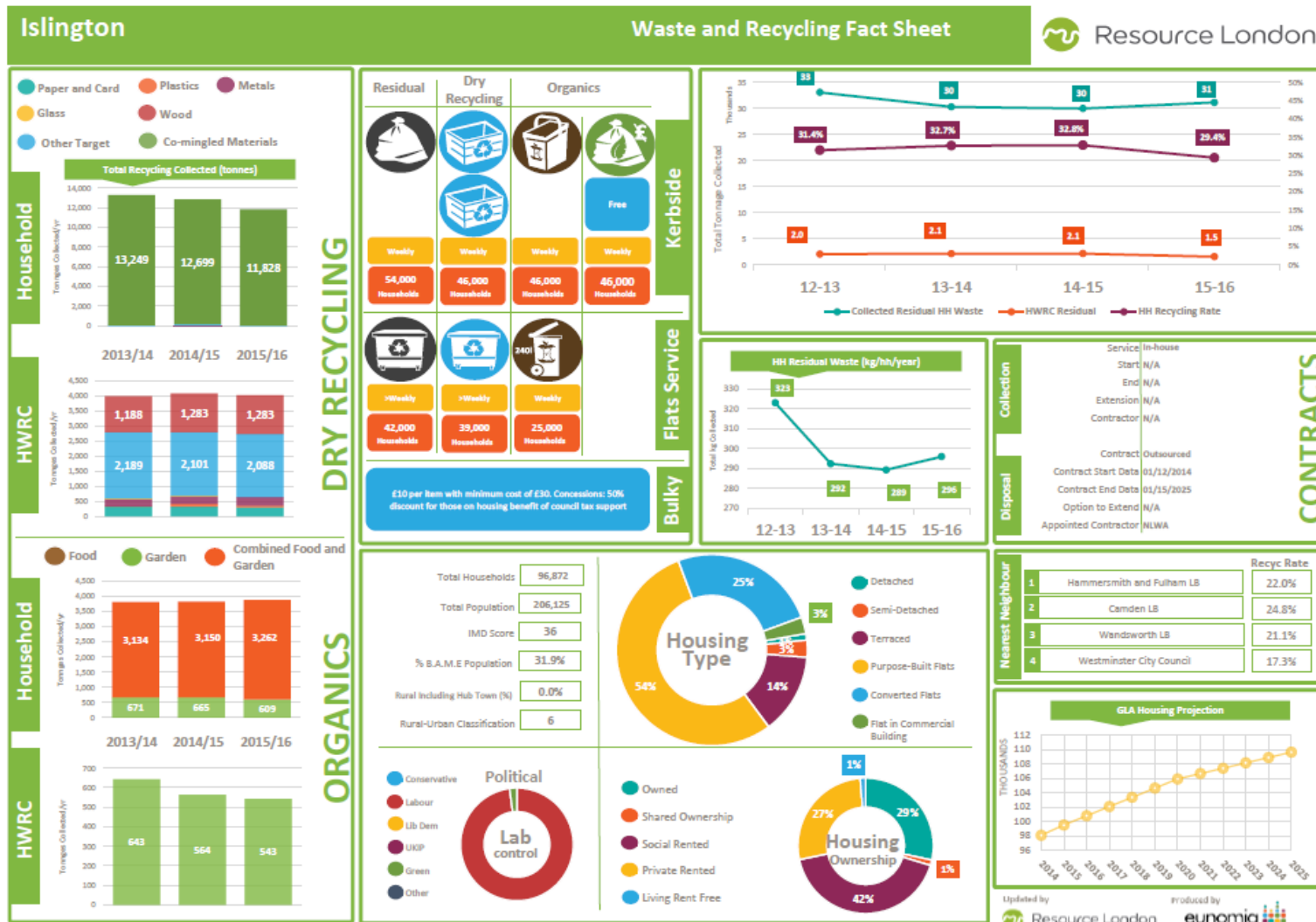
Key objectives

- Restricting residual waste
- Improving the yield and quality of dry recycling
- Increasing and improving the capture of unavoidable food waste
- Minimising the amount of waste produced

Key activities

- Service support
- Communications and behaviour change
- Innovation and development

Islington's data sheet



Islington – borough characteristics

- **Approximately 100,000 households**
- **Approximately 200,000 residents**
- **82% flats**
- **14% terraced properties**
- **Recycling rate has been consistent for the past 5 audited years at around 30%**



Islington – waste collection service

Kerbside properties

- Residual – unlimited weekly sacks
- Comingled recycling – weekly crates and sacks
 - Key materials collected – Paper, cardboard, glass, tins/cans. Plastic bottles, tubs and trays
- Food – weekly
- Garden – weekly non chargeable
- Bulky waste – chargeable

Flats

- Residual – weekly
- Comingled recycling - weekly
- Mixed organics – weekly
- Bulky waste -

Islington - opportunities

Kerbside residual collections

- **Limitation on numbers of sacks**
- **Clear sacks**
- **Containerisation**

Kerbside recycling collections

- **Clear sacks**
- **Additional sacks/crates**

Kerbside food waste collections

- **Improvement in participation**
- **Improvement in capture**

Flats

- **Improving recycling levels**
- **Reducing contamination levels**
 - **Communications with residents**
 - **Back to Basics concept**