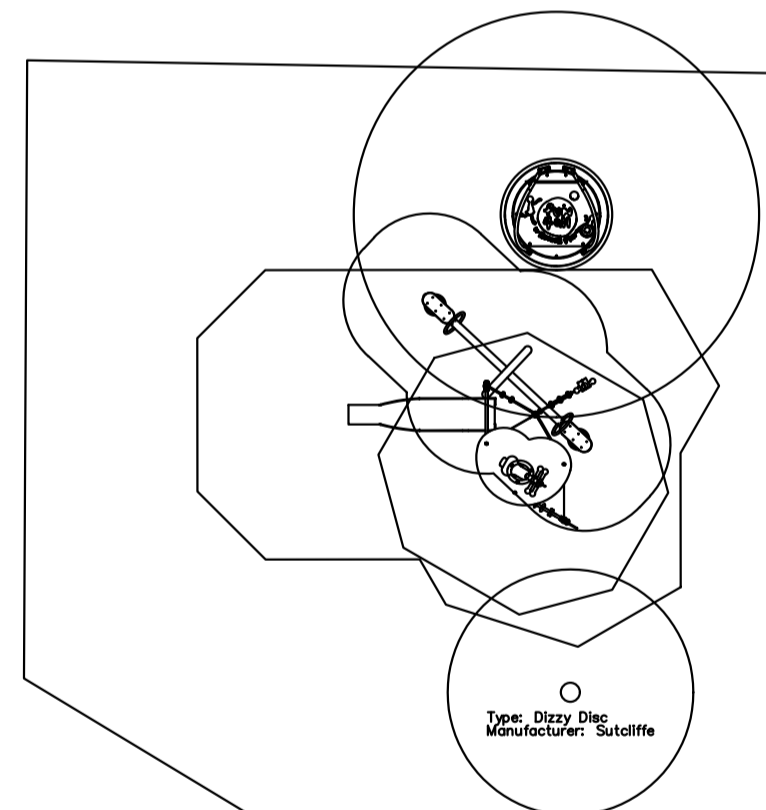
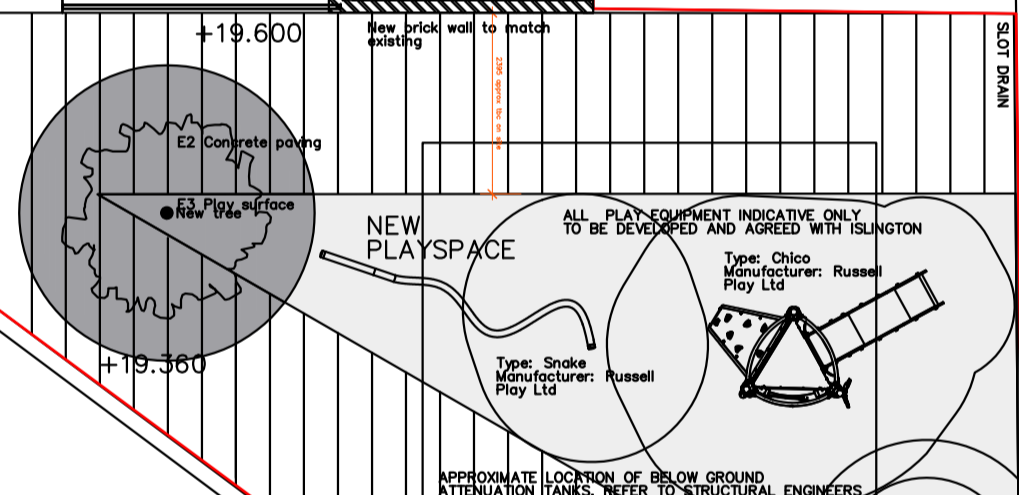
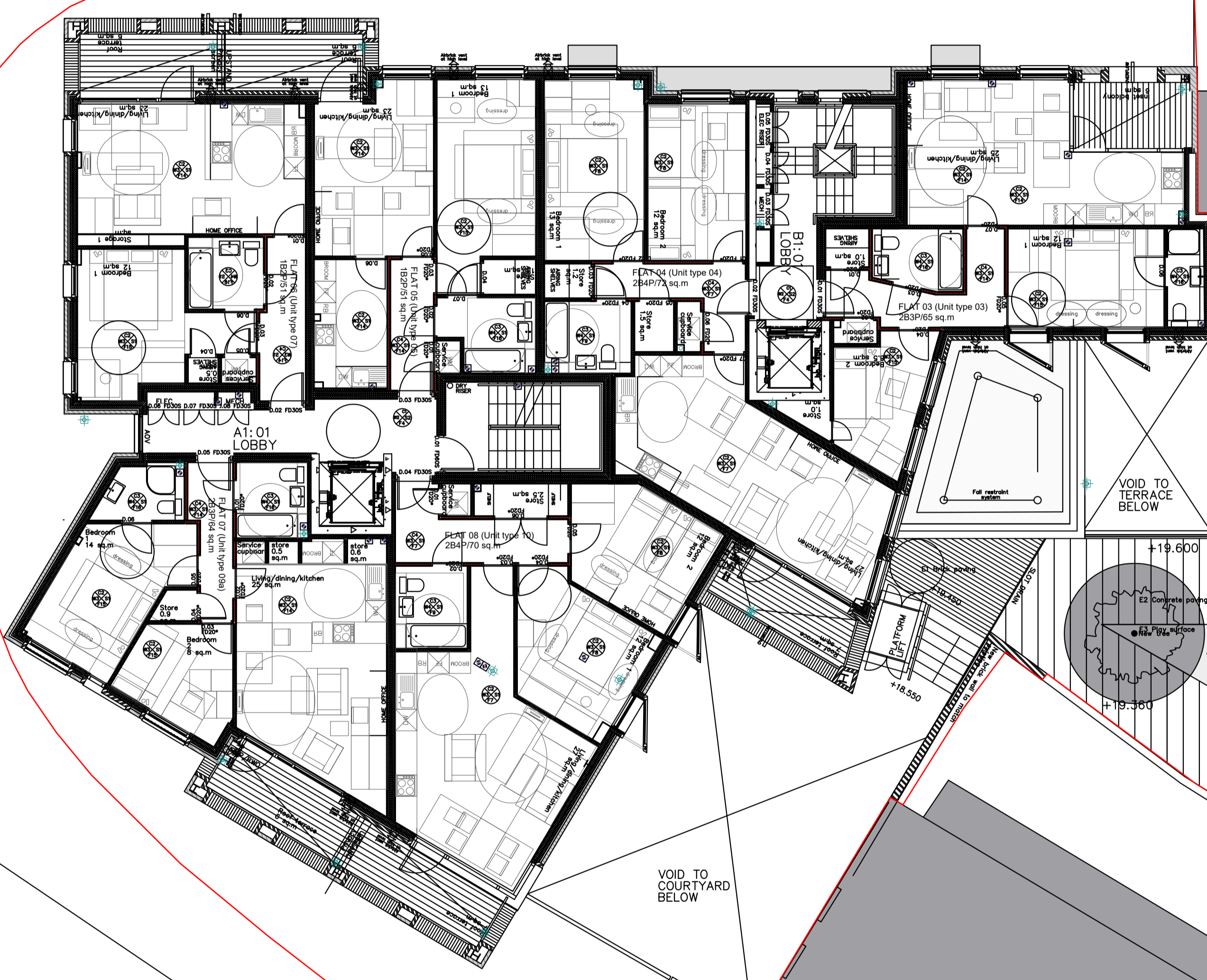


Appendix 1
Plan of Charles Simmons House Redevelopment Site

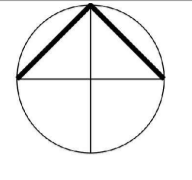
LLOYD BAKER STREET



MARGERY STREET

Notes:
The contractor must verify all dimensions on site before commencing any work on shop drawings, do not scale from this drawing
McBains Ltd copyright

BIM Transmittal Disclaimer
McBains Ltd makes no express or implied warranties with respect to the character, function, or capabilities of the data (inclusive of 3rd party data incorporated within), or the suitability of the data for any particular purpose beyond those originally intended by McBains Ltd. Please refer to our standard terms and conditions for further details.



0 1 2 3 4 5 10

P1 ISSUED FOR PLANNING		12.03.18
Revision	Amendment	Date
L.P	M.B	G.W
Drawn by	Reviewed by	Approved by
59691	FEB-18	1:100 @ A1
MCB Number	Date created	Scale @ A1

McBains
McBains Ltd
5th Fl, 26 Finsbury Square London EC2A 1DS
+44 (0)20 7786 7900
mcbains.co.uk

Client:
MID CONTRACTING & CONSULTING LTD.

Project:
CHARLES SIMMONS HOUSE
ISLINGTON

Drawing Title:
SITE PLAN
FIRST FLOOR

ARCHITECTURE

Drawing / Document Reference	Status							
P1020 - MCB - XX - 01 - DR - A - 0015	D5 - P1							
Project Idem	Originator	Zone	Level	Type	Discipline	Number	Suitability	Revision