



ISLINGTON

# Air Pollution Update

Environment and Regeneration Scrutiny

## Wider policy updates

A combination of policies at different levels influence air quality:

- § national: a draft Environment bill has been debated with air quality elements and a focus on PM2.5 – Multiple private members AQ bills
- § city-wide: The ULEZ has come into effect and led to a reduction of ~30% in NO2 emissions. Strengthened LEZ and ULEX to come in Oct 2020 and Oct 2021
- § borough level: Climate Change emergency actions have strong links to pollution actions. New Air Quality Strategy published



## New Pollution Modelling

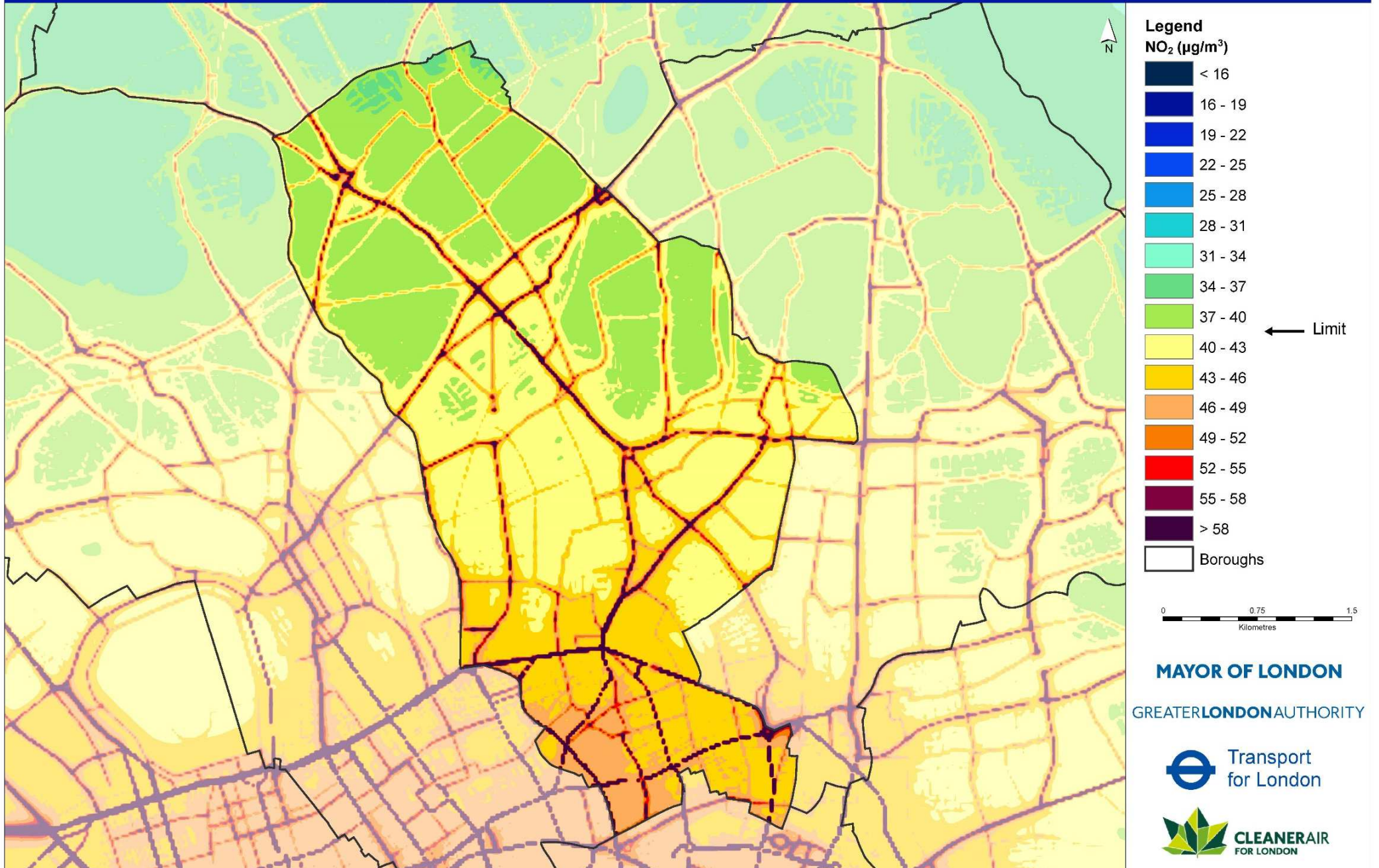
- § The LAEI (Local Atmospheric Emissions Inventory) has been updated
- § The LLAQM (London Local Air Quality Management) has been updated
- § 2016 pollution modelling has been released.

### PM2.5 in Islington

Emissions (Tonnes) from		2010	2013	2016
Road Transport		23.0	19.8	17.7
Aviation		-	-	-
Rail		0.8	0.9	0.9
River		0.0	0.0	0.0
Industrial/Commercial Heat/Power		3.6	3.2	3.7
Industrial Processes		2.1	2.7	1.6
Construction		13.5	7.8	7.3
Commercial Cooking		20.1	20.1	20.1
Domestic Heat/Power		4.6	4.4	4.1
Domestic Biomass (Wood Burning)		8.1	6.2	5.2
Resuspension		0.6	0.6	0.6
Other		2.4	1.7	1.7
<b>Total</b>		<b>78.8</b>	<b>67.4</b>	<b>62.9</b>

# London Borough of Islington Annual Mean NO<sub>2</sub> concentrations 2016

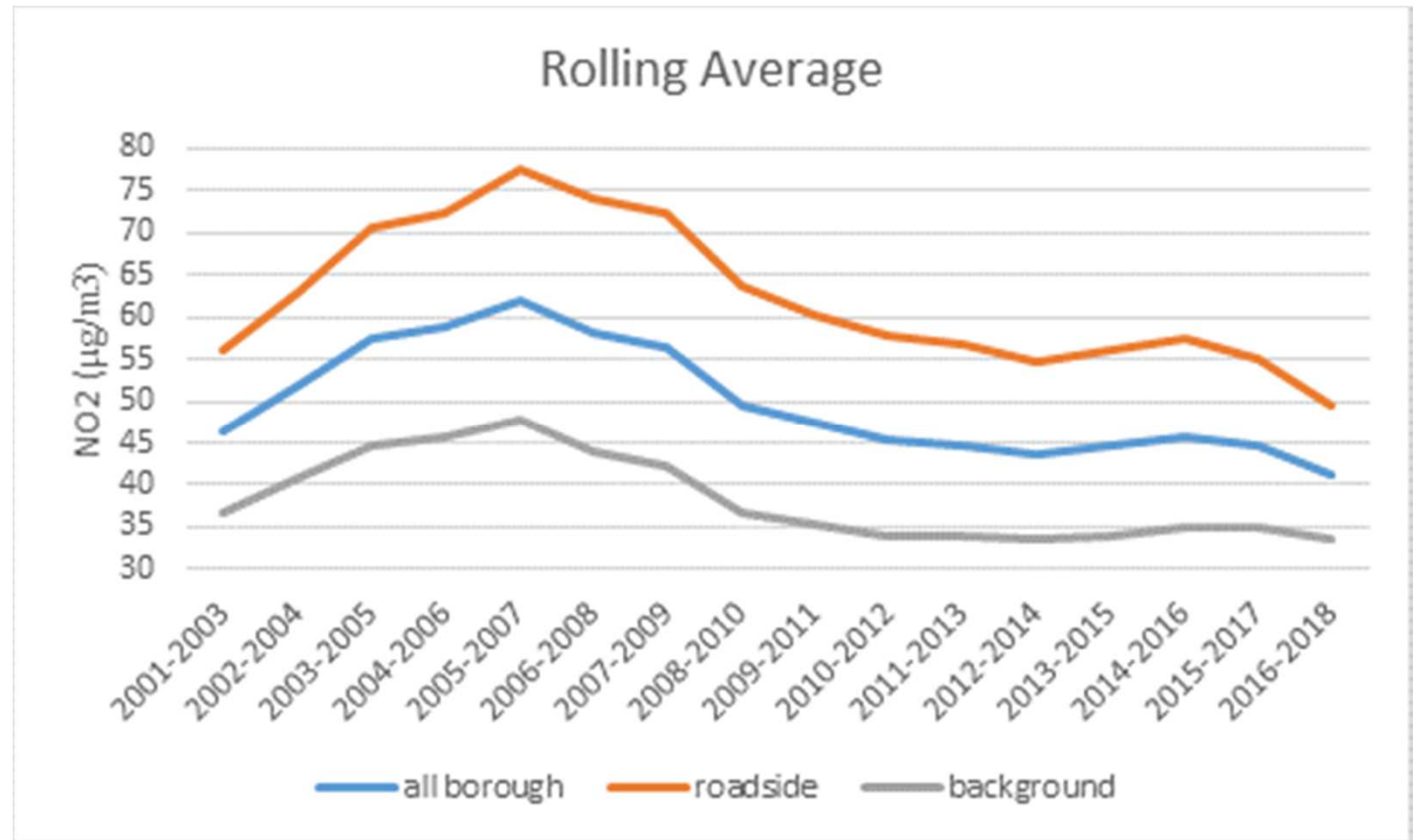
LAEI 2016





# Pollution Monitoring trends

NO<sub>2</sub> monitoring at 20 long term sites across the borough



## Main Projects

- § Clean Air Day / Car Free Day
- § Archway last mile delivery
- § Idling action events
- § School AQ Audits
- § AirTEXT
- § Pollution monitoring
- § Clean Air Walks
- § Air filter testing
- § Pan London idling reduction
- § Zero Emissions Network expansion
- § Canal Eco Zone
- § Healthy Streets Everyday
- § Clean Air Hospitals
- § NRMM monitoring programme

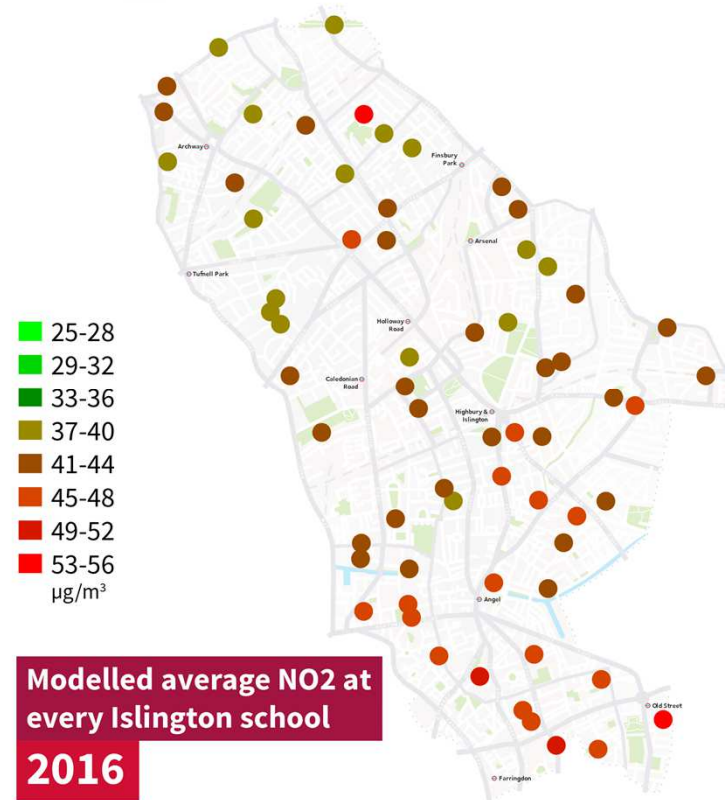
## Schools

- § First schools Air Quality Audits due out soon
- § Working with community groups to design and distribute a Schools Clean Air Toolkit
- § Air filter testing at Elizabeth Garrett Anderson
- § Expanded monitoring of air quality outside schools to include nurseries



# Schools latest AQ data

## Islington schools air quality data



Source: <https://data.london.gov.uk/dataset/london-atmospheric-emissions-inventory--laei--2016>