

Community Safety

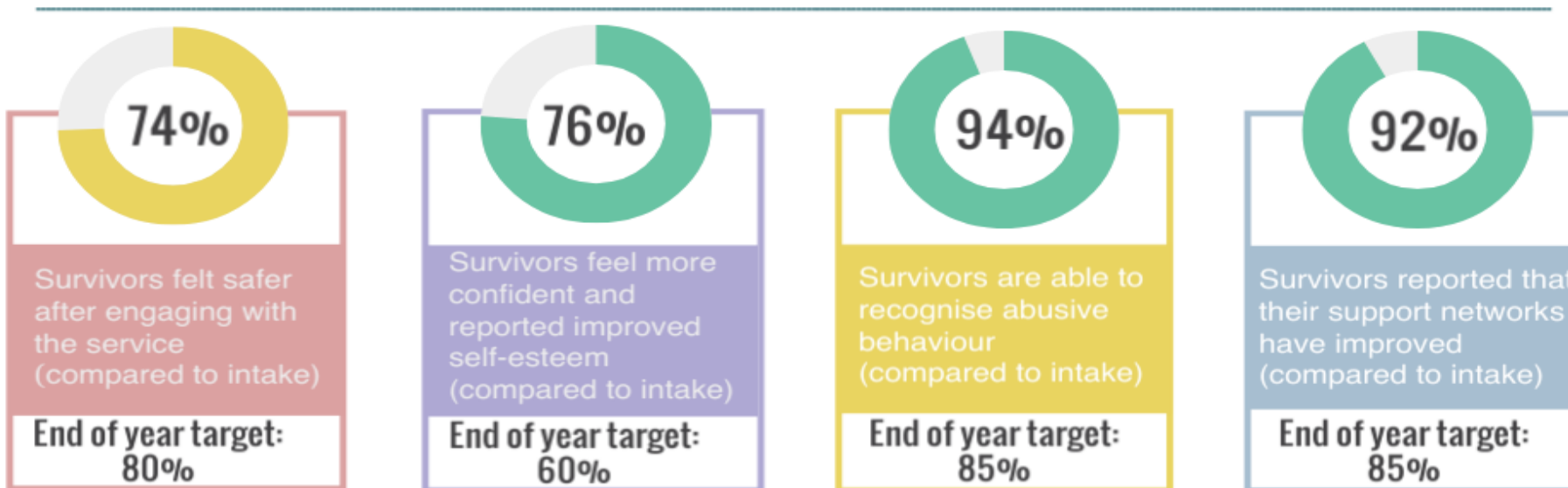
- Police have supported Islington through winter nights plan to successfully meet target of trebling Safe Haven Scheme from 100 to 300 locations
- Knife surrender bins have recovered over 3000 items since their installation two years ago
- High profile series of Women's Walks arranged by local authority with attendance from police. Funding provided from police to deliver women's safety training in conjunction with council and voluntary sector
- Police supporting Islington Hate Crime Forum with dip sampling of Hate Crime incidents to ensure most effective support for victims

Islington VAWG Services reach and impact

Islington VAWG services supported 29% more survivors in 2021-22 than 2020-2021

This financial year (April – Sept 2022)

- **964** referrals received by Islington VAWG services
- **478** survivors supported by Islington VAWG services
- **302** high-risk referrals heard at the Daily Safeguarding Meeting



Daily Safeguarding Meeting

National and London 12 months comparison (based on National 293 MARACs and London 32 MARACs data average including Islington's DSM: October 2021 - September 2022)

REFERRALS IDENTIFICATION

Islington DSM saw nearly double the number of national average and SafeLives recommended volume of referrals for Islington.

REDUCING THE RISK

Islington DSM repeat referral rates are 7% lower than the national average and in line with London average despite 24% higher referral rate.

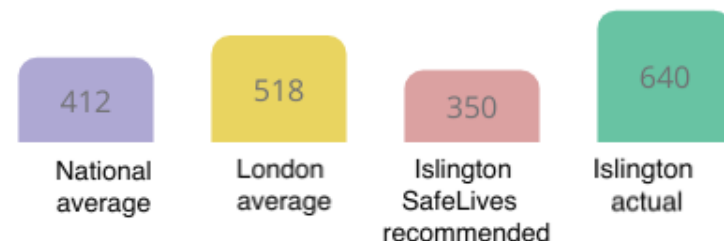
*Islington MARAC data comparison from 2019/2020

EQUALITY

Islington DSM referrals for survivors from Black, Asian and minoritised communities and LGBTQ+ communities and for survivors with a disability are significantly higher than the London average.

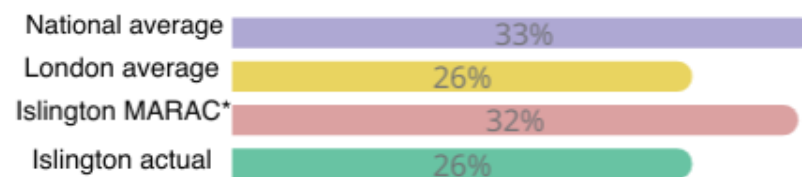
REFERRALS IDENTIFICATION

National and London comparison



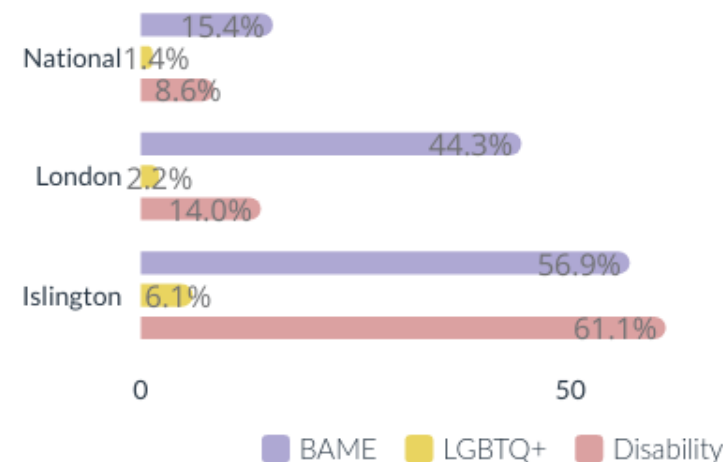
REDUCING THE RISK

National and London comparison

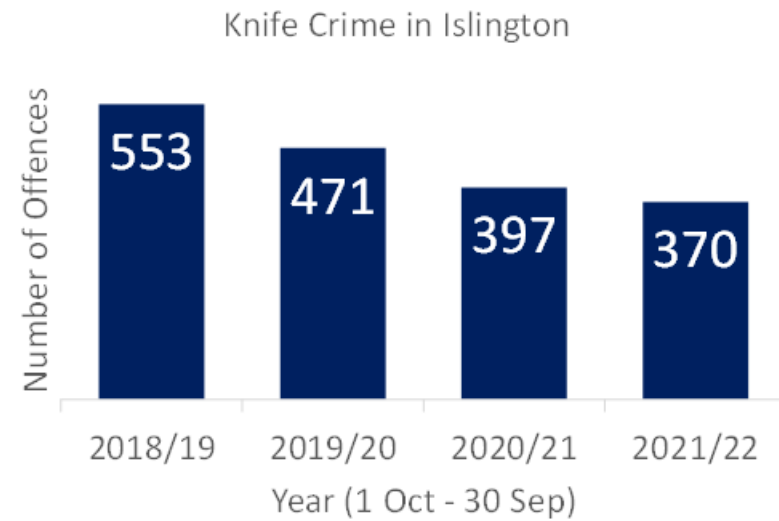


EQUALITY

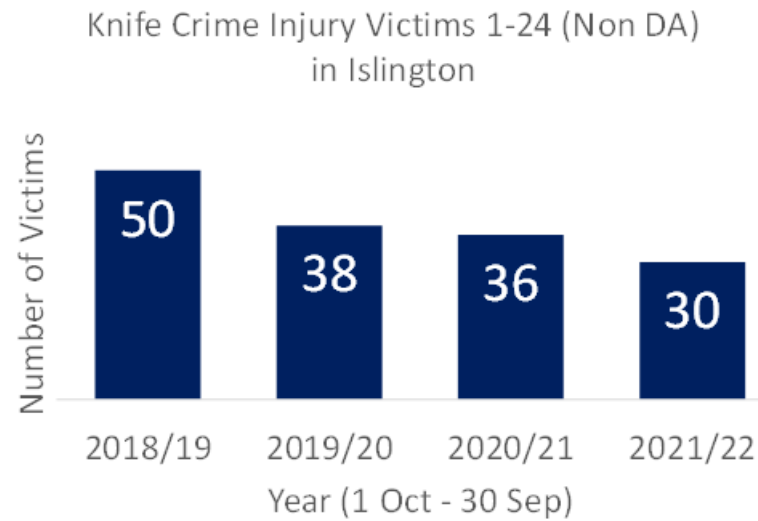
National and London comparison



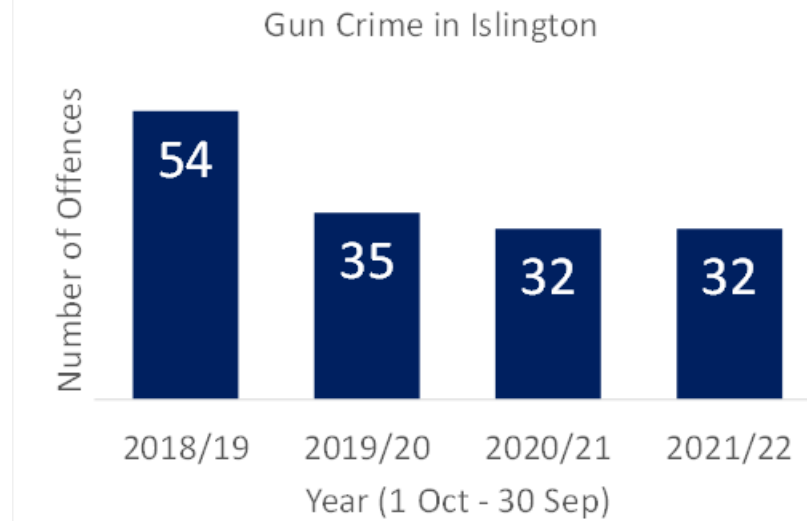
Youth Crime performance 2021/22 compared to 2018/19



- **33% reduction in knife crime**

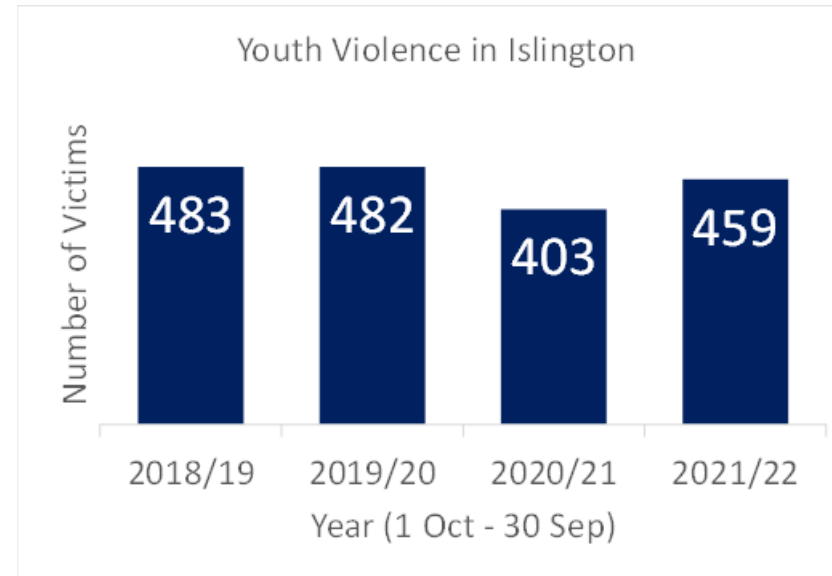
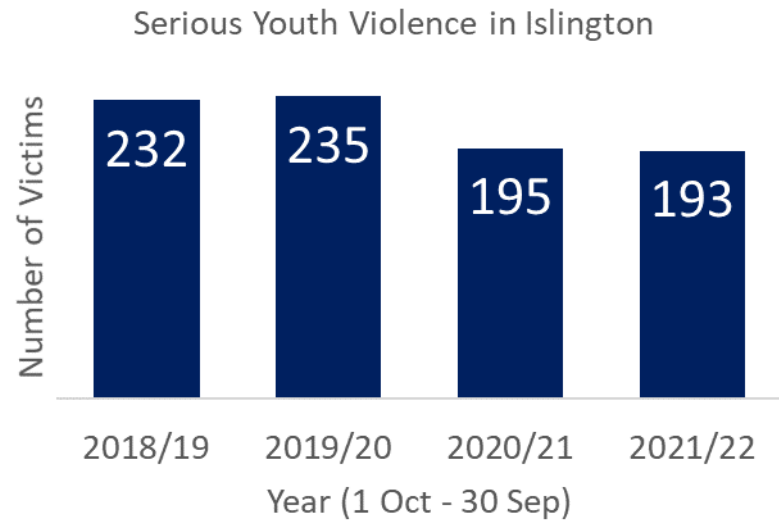


- **40% reduction in knife crime injuries**



- **59% reduction in gun crime**

Youth Crime performance 2021/22 compared to 2018/19



While Islington has seen increases in 2021/22 both youth violence and serious youth violence have shown reductions compared to the same period in 2019/20 and 2018/19 (pre-Covid). Islington is ranked 18th out of 32 MPS boroughs for Serious Youth Violence and 24th out of 32 MPS boroughs for Youth Violence